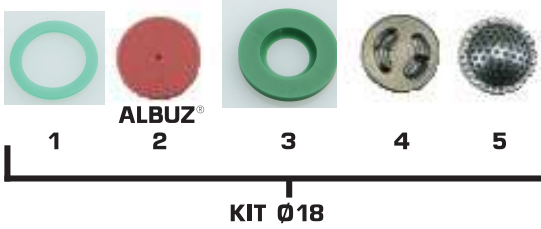


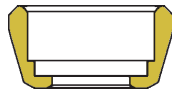
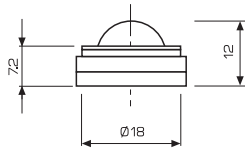


KIT Ø18



Materiali: acciaio inox - allumina
Impiego: su getti atomizzatori per trattamenti fungicidi ed insetticidi.
Ordine minimo: 1000

Materials: stainless steel - alumina
Use: fungicide and insecticide applications on air blast sprayers.
Minimum order: 1000



75.605.47

Da 10 a 40 bar
 From 150 to 600 psi



Conv. Cieco
 Blank core



Conv. Forato
 Drilled core

COME SI ORDINA / HOW TO ORDER

| | Ricambi Spare parts | Foro mm Hole mm | Ordine minimo Minimum order | |
|-----------|------------------------|--------------------|--------------------------------|----|
| 1 | 70.601.37 | - | 50 | |
| 2 | 70.1802.1 | Ø0.8 | 50 | |
| | 70.1802.2 | Ø1.0 | 50 | |
| | 70.1802.3 | Ø1.2 | 50 | |
| | 70.1802.4 | Ø1.5 | 50 | |
| | 70.1802.5 | Ø1.8 | 50 | |
| 3 | 70.1802.6 | Ø2.0 | 50 | |
| | 70.1802.25 | Ø2.3 | 50 | |
| | 70.601.36 | - | 50 | |
| | 4 | 70.204.25 | cieco/blank | 50 |
| | | 70.204.29 | Ø1.0 | 50 |
| 70.204.26 | | Ø1.2 | 50 | |
| 5 | 70.204.27 | Ø1.5 | 50 | |
| | 70.204.28 | Ø1.8 | 50 | |
| | 70.508.10 | - | 50 | |

| Filtro Strainer | COME SI ORDINA - HOW TO ORDER | | | Pressione bar | Portata l/min. | Angolo di spruzzo Spray angle | Pressure psi | Capacity USGal/min |
|--------------------|-------------------------------|-----------------------------|--|------------------|-------------------|-------------------------------------|-----------------|-----------------------|
| | KIT | Ugello mm. Tip mm. | Convogliatore mm. Core dia. mm. | | | | | |
| MESH 40 | 70.810.11 | Ø 0.8 | cieco blank | 10 | 0.98 | 40° | 150 | 0.26 |
| | | | | 15 | 1.17 | 40° | 220 | 0.31 |
| | | | | 20 | 1.26 | 45° | 300 | 0.33 |
| | | | | 30 | 1.54 | 45° | 450 | 0.41 |
| | | | | 40 | 1.76 | 45° | 600 | 0.46 |
| | 70.810.49 | Ø 0.8 | Ø 1.0 | 10 | 1.13 | 20° | 150 | 0.30 |
| | | | | 15 | 1.38 | 20° | 220 | 0.37 |
| | | | | 20 | 1.60 | 25° | 300 | 0.43 |
| | | | | 30 | 1.96 | 25° | 450 | 0.53 |
| | | | | 40 | 2.26 | 25° | 600 | 0.61 |
| | 70.810.12 | Ø 1.0 | cieco blank | 10 | 1.02 | 40° | 150 | 0.27 |
| | | | | 15 | 1.20 | 40° | 220 | 0.32 |
| | | | | 20 | 1.40 | 45° | 300 | 0.37 |
| | | | | 30 | 1.74 | 50° | 450 | 0.54 |
| | | | | 40 | 2.04 | 50° | 600 | 0.54 |
| | 70.810.50 | Ø 1.0 | Ø 1.0 | 10 | 1.80 | 25° | 150 | 0.48 |
| | | | | 15 | 2.20 | 25° | 220 | 0.59 |
| | | | | 20 | 2.53 | 30° | 300 | 0.68 |
| | | | | 30 | 3.12 | 30° | 450 | 0.84 |
| | | | | 40 | 3.60 | 30° | 600 | 0.97 |
| 70.810.13 | Ø 1.2 | cieco blank | 10 | 1.32 | 50° | 150 | 0.35 | |
| | | | 15 | 1.62 | 50° | 220 | 0.43 | |
| | | | 20 | 1.86 | 55° | 300 | 0.49 | |
| | | | 30 | 2.19 | 55° | 450 | 0.58 | |
| | | | 40 | 2.55 | 60° | 600 | 0.67 | |
| 70.810.51 | Ø 1.2 | Ø 1.0 | 10 | 2.40 | 35° | 150 | 0.65 | |
| | | | 15 | 2.90 | 35° | 220 | 0.77 | |
| | | | 20 | 3.37 | 40° | 300 | 0.91 | |
| | | | 30 | 4.13 | 40° | 450 | 1.11 | |
| | | | 40 | 4.78 | 40° | 600 | 1.28 | |
| 70.810.14 | Ø 1.2 | Ø 1.2 | 10 | 2.53 | 45° | 150 | 0.67 | |
| | | | 15 | 3.10 | 45° | 220 | 0.82 | |
| | | | 20 | 3.55 | 45° | 300 | 0.94 | |
| | | | 30 | 4.35 | 40° | 450 | 1.15 | |
| | | | 40 | 5.00 | 40° | 600 | 1.32 | |
| 70.810.15 | Ø 1.5 | cieco blank | 10 | 2.25 | 50° | 150 | 0.59 | |
| | | | 15 | 2.75 | 50° | 220 | 0.73 | |
| | | | 20 | 3.18 | 55° | 300 | 0.84 | |
| | | | 30 | 3.90 | 60° | 450 | 1.03 | |
| | | | 40 | 4.40 | 60° | 600 | 1.16 | |
| 70.810.52 | Ø 1.5 | Ø 1.0 | 10 | 3.71 | 40° | 150 | 0.99 | |
| | | | 15 | 4.35 | 40° | 220 | 1.15 | |
| | | | 20 | 4.95 | 45° | 300 | 1.34 | |
| | | | 30 | 5.95 | 45° | 450 | 1.72 | |
| | | | 40 | 6.73 | 45° | 600 | 1.99 | |
| 70.810.16 | Ø 1.5 | Ø 1.2 | 10 | 3.75 | 55° | 150 | 1.01 | |
| | | | 15 | 4.44 | 55° | 220 | 1.18 | |
| | | | 20 | 5.14 | 50° | 300 | 1.38 | |
| | | | 30 | 6.10 | 50° | 450 | 1.64 | |
| | | | 40 | 6.93 | 50° | 600 | 1.86 | |
| 70.810.17 | Ø 1.5 | Ø 1.5 | 10 | 3.87 | 40° | 150 | 1.04 | |
| | | | 15 | 4.61 | 45° | 220 | 1.23 | |
| | | | 20 | 5.30 | 45° | 300 | 1.42 | |
| | | | 30 | 6.43 | 45° | 450 | 1.73 | |
| | | | 40 | 7.31 | 45° | 600 | 1.96 | |
| 70.810.18 | Ø 1.8 | cieco blank | 10 | 3.15 | 45° | 150 | 0.83 | |
| | | | 15 | 3.85 | 50° | 220 | 1.02 | |
| | | | 20 | 4.45 | 55° | 300 | 1.18 | |
| | | | 30 | 5.45 | 55° | 450 | 1.44 | |
| | | | 40 | 6.25 | 60° | 600 | 1.65 | |
| 70.810.19 | Ø 1.8 | Ø 1.5 | 10 | 5.10 | 50° | 150 | 1.35 | |
| | | | 15 | 6.25 | 50° | 220 | 1.65 | |
| | | | 20 | 7.44 | 50° | 300 | 1.95 | |
| | | | 30 | 8.52 | 45° | 450 | 2.25 | |
| | | | 40 | 10.40 | 45° | 600 | 2.75 | |
| 70.810.20 | Ø 1.8 | Ø 1.8 | 10 | 6.44 | 50° | 150 | 1.70 | |
| | | | 15 | 7.85 | 50° | 220 | 2.07 | |
| | | | 20 | 9.10 | 45° | 300 | 2.40 | |
| | | | 30 | 11.10 | 40° | 450 | 2.93 | |
| | | | 40 | 12.80 | 40° | 600 | 3.38 | |
| 70.810.21 | Ø 2.0 | cieco blank | 10 | 3.28 | 50° | 150 | 0.85 | |
| | | | 15 | 4.02 | 50° | 220 | 1.05 | |
| | | | 20 | 4.60 | 55° | 300 | 1.22 | |
| | | | 30 | 5.65 | 55° | 450 | 1.50 | |
| | | | 40 | 6.55 | 60° | 600 | 1.73 | |
| 70.810.22 | Ø 2.0 | Ø 1.8 | 10 | 7.00 | 50° | 150 | 1.88 | |
| | | | 15 | 8.60 | 50° | 220 | 2.28 | |
| | | | 20 | 9.90 | 45° | 300 | 2.66 | |
| | | | 30 | 12.10 | 40° | 450 | 3.25 | |
| | | | 40 | 14.00 | 40° | 600 | 3.83 | |