

HCA 80

HOLLOWCONE AIR 80°



Utilizzo
Use
Utilización

Herbicides



Suitable for

Fungicides



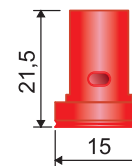
Suitable for

Insecticides



Suitable for

Dimensioni (mm)
Size (mm)
Dimensiones (mm)



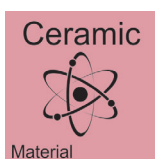
- Ugello a cono vuoto con inserto in ceramica e corpo in Delrin®.
- Il getto creato da HCA80 garantisce una copertura ottimale pur riducendo il rischio di deriva del prodotto.
- Adatto per l'utilizzo su atomizzatore.
- Il corpo esterno stampato in Delrin®, unito all'inserto in ceramica conferisce eccezionali caratteristiche di durata.
- Adatto per trattamenti con erbicidi, fungicidi ed insetticidi.

- Hollowcone nozzle with ceramic insert and Delrin® body.
- HCA80 spray ensures excellent spraying range, yet reducing the product drift.
- Suitable for orchard sprayer.
- Their Delrin®-molded outer body, together with their ceramic insert, ensures an exceptionally long useful life.
- Suitable for herbicides, fungicides and pesticides.

- Boquilla de cono vacío con inserto de cerámica y cuerpo en Delrin®.
- El chorro creado por HCA80 garantiza una cobertura óptima reduciendo el riesgo de deriva del producto.
- Adecuado para el uso en atomizador.
- El cuerpo exterior moldeado en Delrin®, junto al inserto de cerámica, le otorga excepcionales características de durabilidad.
- Adecuado para tratamientos con herbicidas, fungicidas e insecticidas.



80°
Spraying angle



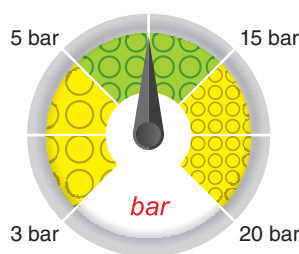
Ceramic
Material



402905xx
Cap



5-10 Nm
Tightening torque for nuts



Orchard
Treatment



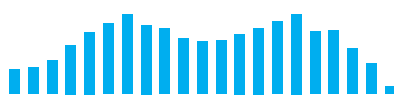
ISO 10625
Colour coding



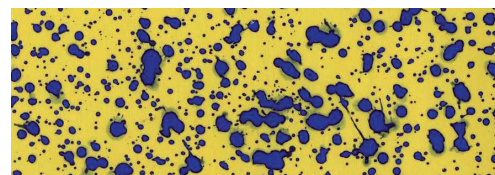
10 pcs.
Blister pack
cod. + B1



Copertura
Spray coverage
Cobertura

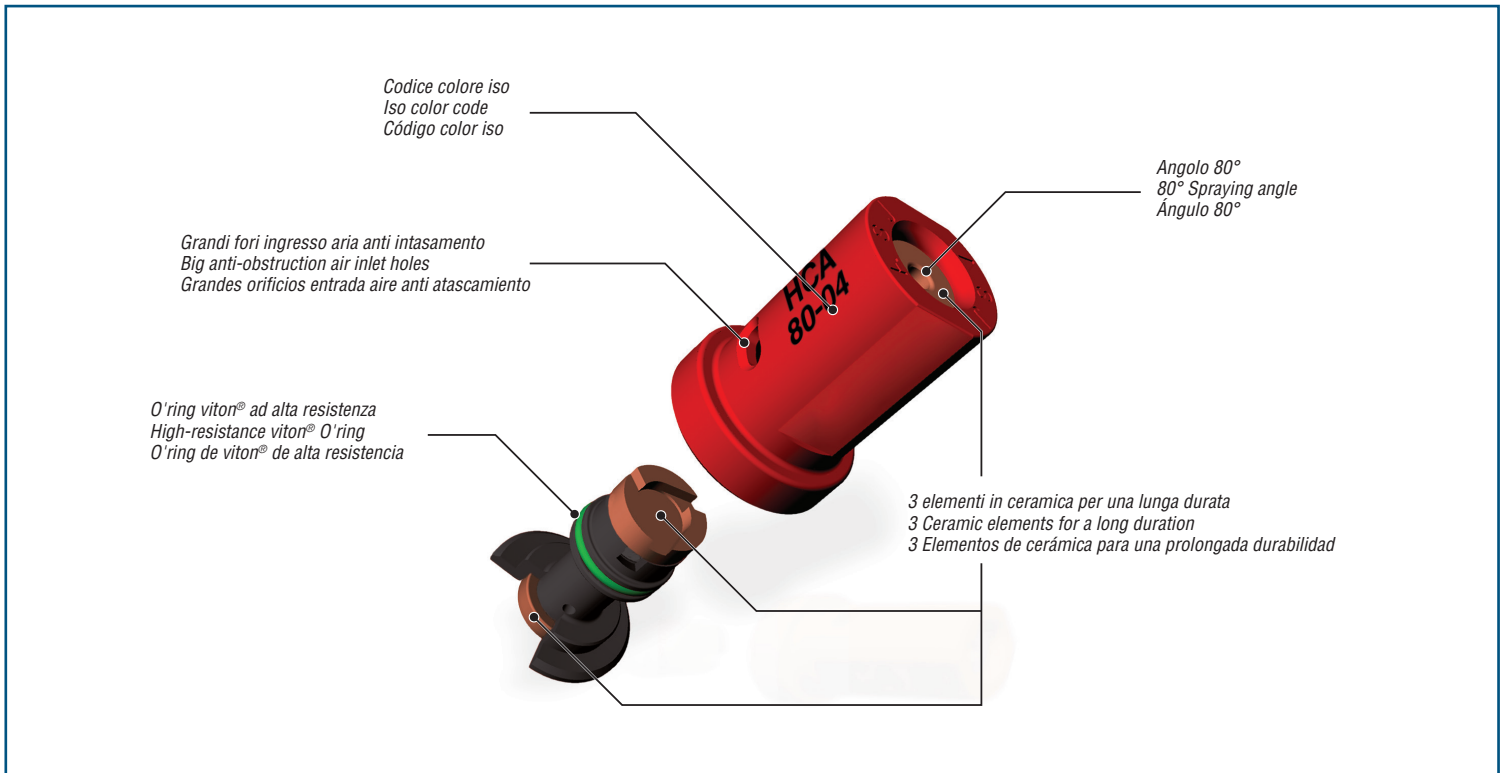


Distribuzione
Nozzle distribution pattern
Distribución



Dimensione delle gocce su bersaglio
Drop size pattern on target
Dimensiones de las gotas en el blanco

COD.	q (l/min)																	
	3 bar	4 bar	5 bar	6 bar	7 bar	8 bar	9 bar	10 bar	11 bar	12 bar	13 bar	14 bar	15 bar	16 bar	17 bar	18 bar	19 bar	20 bar
HCA8001	0.40	0.46	0.52	0.57	0.61	0.65	0.69	0.73	0.77	0.80	0.83	0.86	0.89	0.92	0.95	0.98	1.01	1.03
HCA80015	0.60	0.69	0.77	0.85	0.92	0.98	1.04	1.10	1.15	1.20	1.25	1.30	1.34	1.39	1.43	1.47	1.51	1.55
HCA8002	0.80	0.92	1.03	1.13	1.22	1.31	1.39	1.46	1.53	1.60	1.67	1.73	1.79	1.85	1.90	1.96	2.01	2.07
HCA80025	1.00	1.15	1.29	1.41	1.53	1.63	1.73	1.83	1.91	2.00	2.08	2.16	2.24	2.31	2.38	2.45	2.52	2.58
HCA8003	1.20	1.39	1.55	1.70	1.83	1.96	2.08	2.19	2.30	2.40	2.50	2.59	2.68	2.77	2.86	2.94	3.02	3.10
HCA80035	1.40	1.62	1.81	1.98	2.14	2.29	2.42	2.56	2.68	2.80	2.91	3.02	3.13	3.23	3.33	3.43	3.52	3.61
HCA8004	1.60	1.85	2.07	2.26	2.44	2.61	2.77	2.92	3.06	3.20	3.33	3.46	3.58	3.70	3.81	3.92	4.03	4.13
HCA8005	2.00	2.31	2.58	2.83	3.06	3.27	3.46	3.65	3.83	4.00	4.16	4.32	4.47	4.62	4.73	4.90	5.03	5.16



$$\text{Vol (l/ha)} = \frac{\text{l/min} \times n \times 600}{\text{km/h} \times D \text{ (m)}}$$

